

COUNTY OF LEAVENWORTH

Department of Public Works

300 Walnut, Suite 007
Leavenworth, Kansas 66048-2815
Phone (913) 684-0470
Fax (913) 684-0473

REQUEST FOR QUALIFICATIONS

Leavenworth County Public Works Department is soliciting qualifications for engineering design services on the following project: Pavement Preservation and Turning Movement Improvements on County Route 1 and 222nd Street.

CONTACTS:

Bill Noll, PS MPA CPM CFM - Leavenworth County Infrastructure and Construction Services Director
Email: bnoll@leavenworthcounty.gov
Phone: (913) 684-0470

QUALIFICATIONS DUE:

10:00 am July 10th, 2026.

COPY REQUIREMENTS:

Submit 5 hard copies and one PDF format copy on a USB flash drive.

PRE-SUBMITTAL MEETING:

No meeting is scheduled.

QUESTIONS:

Please contact Bill Noll, with questions at email bnoll@leavenworthcounty.gov. The County will only respond to written questions. Submitted questions less than 72 hours prior to the qualifications being due will not be acted on.

SUBMITTAL PROCESS:

Qualifications shall be submitted at the following location and shall be time stamped no later than 10:00 a.m., July 10th, 2026. Qualifications shall be sealed and labeled "Engineering Design Services for County Route 1 Development Improvements". This proposal is for Phase 1 of a potential three phase improvement project.

Leavenworth County Clerk, Courthouse
300 Walnut Street, Suite 106
Leavenworth, KS 66048
Attn: County Clerk

Phase 1:

- Eastbound Left Hand Turn Lane onto Northbound 222nd Street from County Route 1
- Westbound Right Hand Turn Lane onto Northbound 222nd Street from County Route 1
- 2" Mill and Overlay from the Southern KTA Ramps to US 24/40 Highway on County Route 1
- 2' Mill and Overlay from County Route 1 to the southern boundary of the Tonganoxie Industrial Park (City Limit on East Side of Roadway) on 222nd Street.
- Northbound Right Hand Turn Lane from 222nd to Potential Development Site

Phase 2: Future Improvements Not Part of This RFQ

- Roadway Improvement Project on Kansas Ave from 222nd Street to 214th Street to a County Collector Standard
- Roadway Improvement Project on 214th Street from Kansas Ave to Hemphill Road to a County Collector Standard
- Roadway Improvement Project on Hemphill Road from 214th Street to 222nd Street to a County Collector Standard
- Intermittent Full Depth Patching and Repair on County Route 1 and 222nd Street

Phase 3: Future Improvements Not Part of this RFQ

- 2" Mill and Overlay on County Route 1 from US-24/40 to the Southern KTA Ramps on County Route 1
- Roadway Improvement Project on 222nd Street from Kansas Ave. to County Route 1 to an Industrial Road Standard

The county cannot guarantee/obligate the future contracts for Phase 2 or Phase 3 at this time. The county desires to complete this three-phase project with one consultant but reserves the right for negotiations on future phases.

PROJECT SCHEDULE – Phase 1:

Selection process	July 2026
Field Check Phase	February 2027
Legal Descriptions and Exhibits	March 2027
Design Completion	May 2027
Bidding	Summer 2027
Construction	July - November 2027

PROJECT FUNDING:

County Administer Funds.

QUALIFICATIONS:

The selected firm will need to be on the KDOT prequalified list for road design services.

SUBMITTAL COMPONENTS:

Firms are required to complete a qualification submittal including the information as outlined in this request. The submittal shall include:

- General Firm Information
 - Firm Name
 - Contact Name, telephone number, email address and mailing address
 - Office Location where the work will be performed.
- Key project staff and experience
 - Organizational chart of key staff that will be on this project

- Resumes of key project staff describing the individual's previous experience with the design of similar project.
- Conflicts of Interest
 - No Conflicts of interest shall be permitted with the project. A potential conflict of interest exists if any member of the firm has any interest that would conflict or has the appearance of conflicting, in any manner with the performance of the project.
- Availability
 - Do you have the staff and resources to perform the work according to the schedule above?
- Qualifications
 - Project understanding and approach
 - Demonstrated track record of producing projects on time and within budget.
 - Relevant experience
 - Proposed sub-consultants
- Submittals shall be limited to 10 pages not including covers and dividers

SELECTION

Qualifications received will be reviewed and evaluated on the items above. After reviewing each submittal, a selection committee will select the most qualified firm. The committee will negotiate the contract scope and fee and make recommendations to the County Commission to execute the design contract. In the event a contract cannot be negotiated with the most qualified firm, staff will then negotiate a contract with the second most qualified firm as determined by the selection committee. After successful completion of the contract agreement with the selected firm, the remaining firms will be notified about the outcome by email.

SERVICES REQUESTED:

The selected firm will provide engineering design services for both the preliminary and final design phases, bidding phases and construction period services as outlined below:

Geotechnical:

- Subsurface explorations to determine existing soil properties and provide rock depths in cut sections and pavement thickness. In rock cut sections rock cores will be required to determine rock strata from the top of cut bank. These will be used to determine grading limits and rock cut parameters.

Survey:

- Provide topographic survey for the limits of the project in accordance with KDOT standards
- All existing ROW, Easement, and Property Owner information to be shown
- Survey section corners
- Provide title reports for all adjacent properties
- Provide legal descriptions for any additional Right of Way, Permanent Drainage Easements, and Temporary Construction Easements.
- Coordination with local utilities to show located information on the plans.
- Survey prepared to the State Minimum Standards.

Hydrology:

- Perform all hydrologic, hydraulic, analyses for culverts that are being placed to determine if the culvert design is in compliance with the current edition of the Leavenworth County Road Construction and Storm Water Drainage Standards.

Roadway

- Signing, striping, and safety improvements as necessary.
- Traffic Control plans demonstrating construction phasing and any necessary closure windows or traffic diversion methods as necessary.
- Intersection sight distance verification
- Utilizing sound engineering judgement, the lengths of the turning lanes will need to be determined as part of the design

Permits:

- Consultant shall prepare all supporting documentation and prepare all forms for any required permits, including but not limited to the following -
 - KDHE Permit (NOI)
 - SWPPP (If Required)
 - KDWPT
 - KSHS

Utility Coordination:

- Facilitate Utility Coordination meetings
- Coordinate with utility owners for relocation efforts

Deliverables:

- Plan and Profile sheets, Demolition and removals, Typical Sections, drive layouts, guardrail layouts, erosion control plans, cross sections, detail sheets (special, typical, and standard), construction quantities.
- Provide milestone submittals (Field Check, Office Check, Final), including engineering cost estimates at each submittal.
- All construction documents shall be created per KDOT standard
- Survey Sheet to be filed with the Leavenworth County Register of Deeds.
- Estimated overall project schedule from selection of the consultant to final project closeout

Bidding Services:

- Prepare written addenda to the bidding documents
- Attend and prepare for the pre bid meeting and prepare minutes
- Answer Contractor questions during the bid period.
- Prepare bid tabs in MS Excel

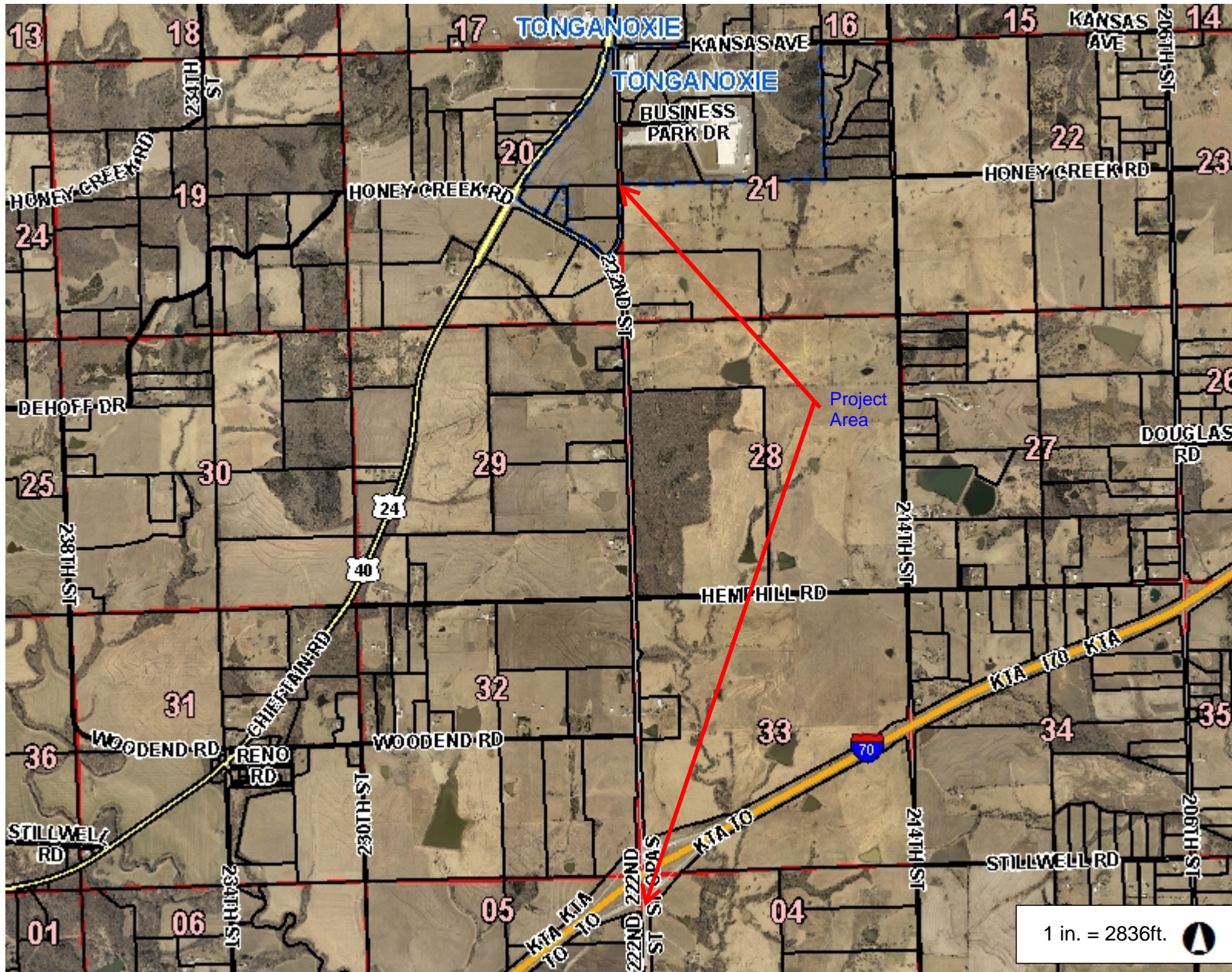
Construction Services:

- Preconstruction meeting
- Address RFIs from contractor as received
- Review Shop Drawings
- Plan revisions
- As built plans
- Up to Two (2) field visits

ATTACHMENT

Project location map

Leavenworth County, KS



Legend

- Parcel
- City Limit Line
- Major Road**
- <all other values>
- 70
- Road**
- <all other values>
- PRIVATE
- Railroad
- Section**
- Section Boundaries
- County Boundary

1 in. = 2836ft.

5,672.8 0 2,836.40 5,672.8 Feet

This Cadastral Map is for informational purposes only. It does not purport to represent a property boundary survey of the parcels shown and shall not be used for conveyances or the establishment of property boundaries.

THIS MAP IS NOT TO BE USED FOR NAVIGATION

Notes